

Dr. Mark Pitzer, Psychology, 2018

Vitreous Humor

Retina

5 layers of cells

Fovea

Macula

Fovea - cones only
very tightly packed

↳ 50,000 cones

Receptors → 7X human cones

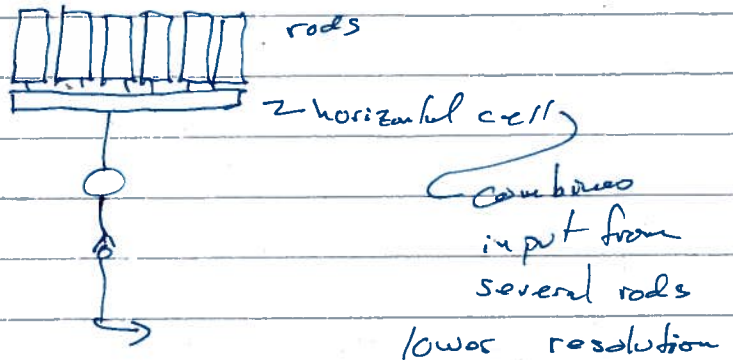
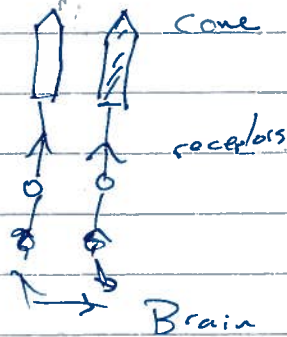
peripheral - rods (more sensitive to low light)

1 photon - "activates rod"

7 photons - conscious awareness.
- very sensitive to motion.

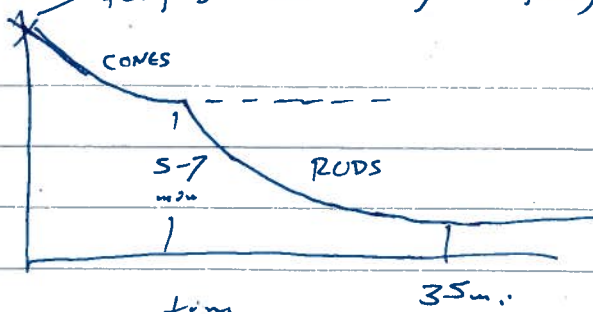
Optic disk
(no rods/cones)
blind spot.

Magnocellular System



combines input from several rods
lower resolution

Dark adaptation
fully 'bleached' (bright light)



CONES - "fully" dark adapted ~5-7min

RODS - more slow to adapt, but better (w/ 35min)